

Anexo N° 8

Gráficos de la Mujer del sector pesquero que trabaja en Organismo de contralor sanitario

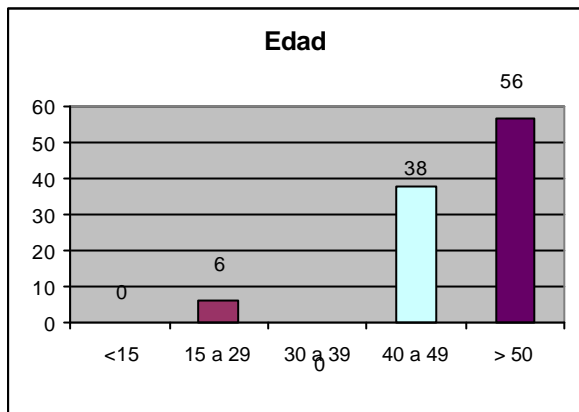


Fig. 1 Edad

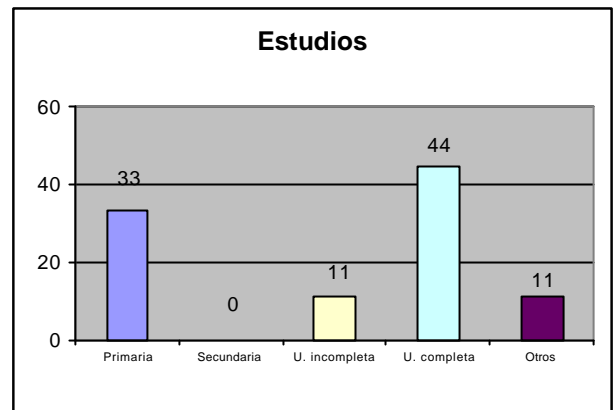


Fig. 3 Estudios

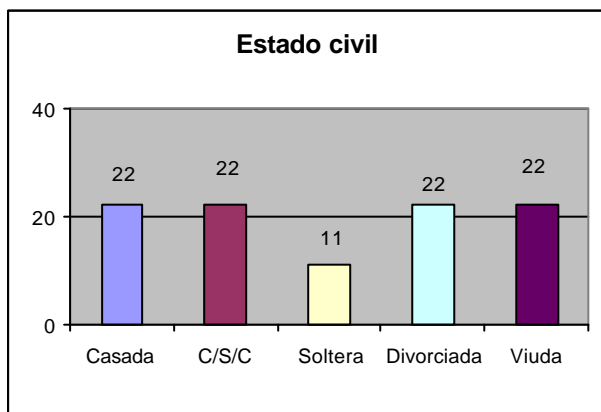


Fig. 2 Estado Civil

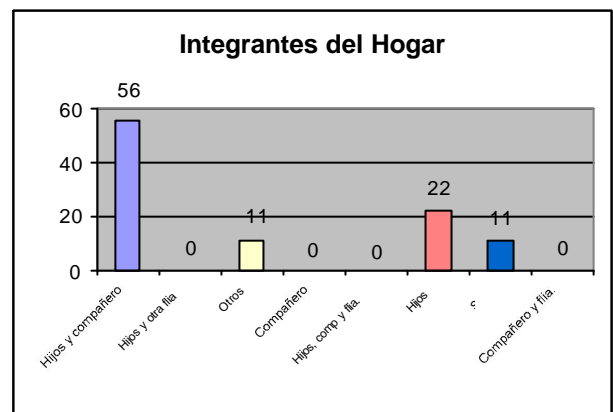


Fig.4 Integrantes del hogar

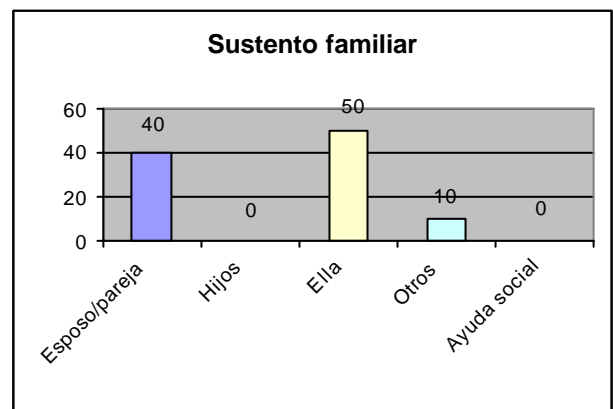


Fig. 5 Sustento familiar

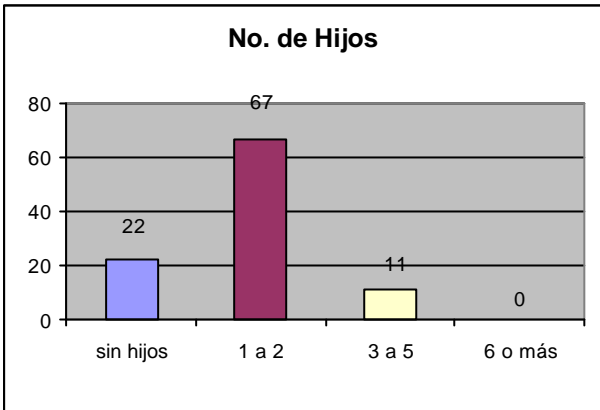


Fig. 6 N° de hijos

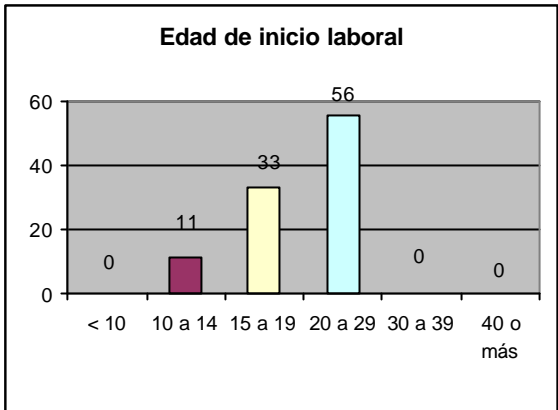


Fig. 9 Inicio laboral

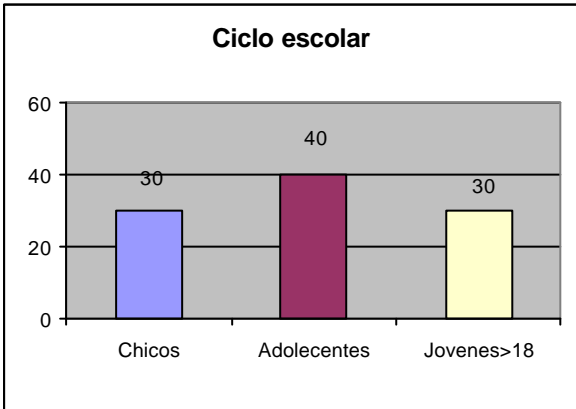


Fig. 7 Ciclo escolar

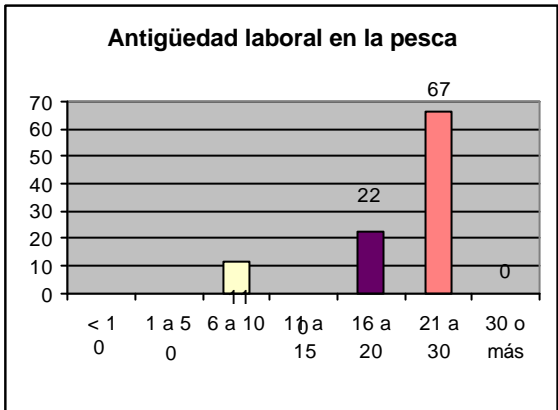


Fig. 10 Antigüedad

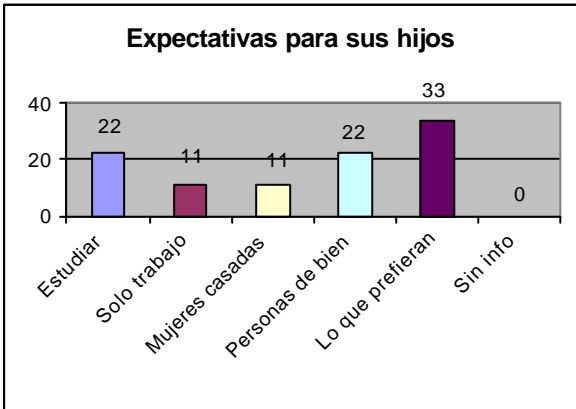


Fig. 8 Futuro de sus hijos

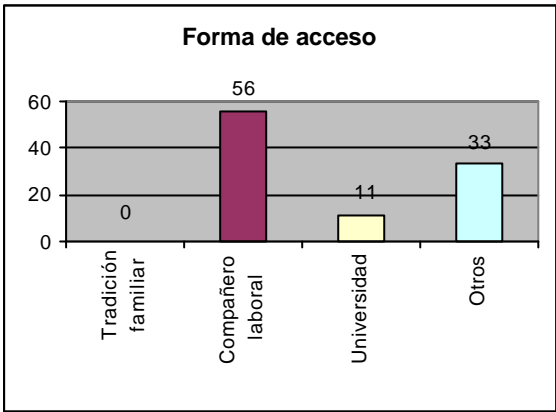


Fig. 11 Acceso Laboral

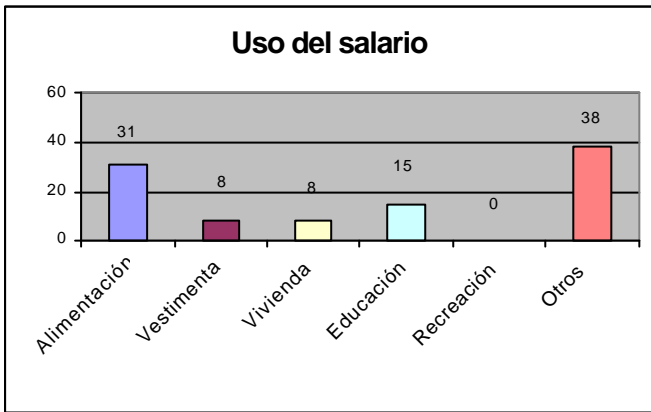


Fig. 12 Uso del salario