

**Anexo N° 6**

**Gráficos de la Mujer del sector pesquero que trabaja en los puestos costeros/ puestos ambulantes**

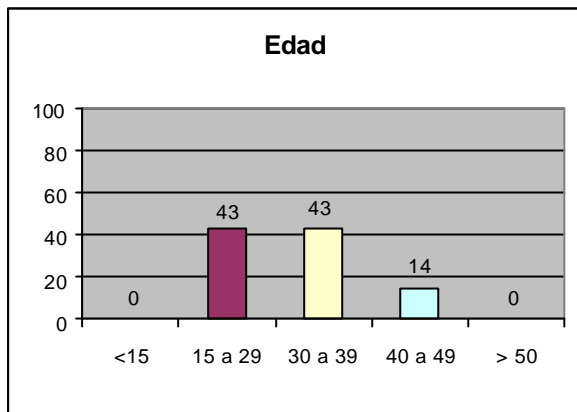


Fig. 1 Edad

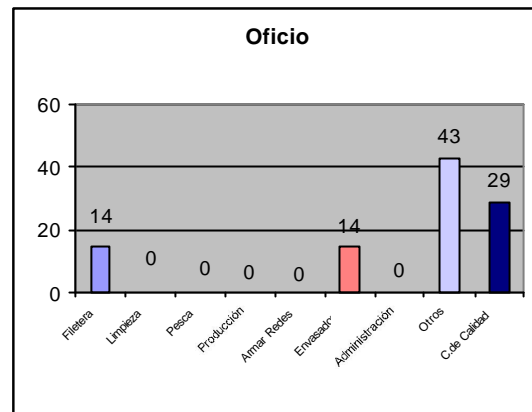


Fig. 4 Oficio

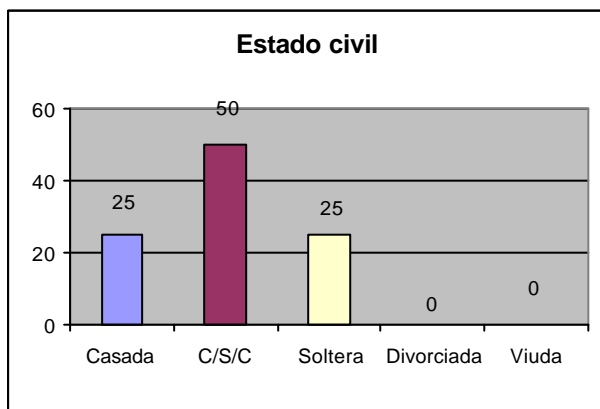


Fig. 2 Estado Civil

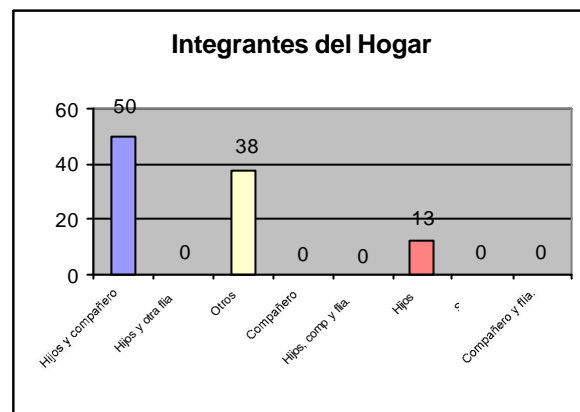


Fig. 5 Integrantes del hogar

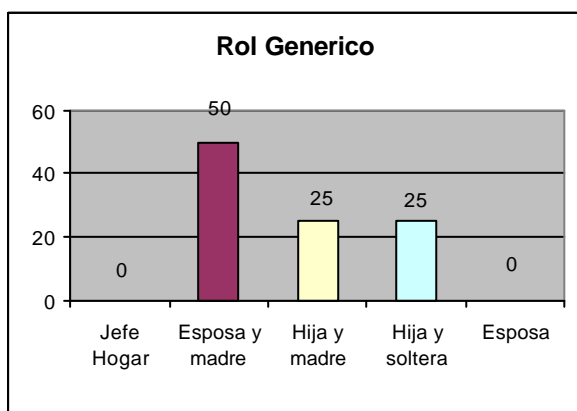


Fig. 3 Rol Genérico

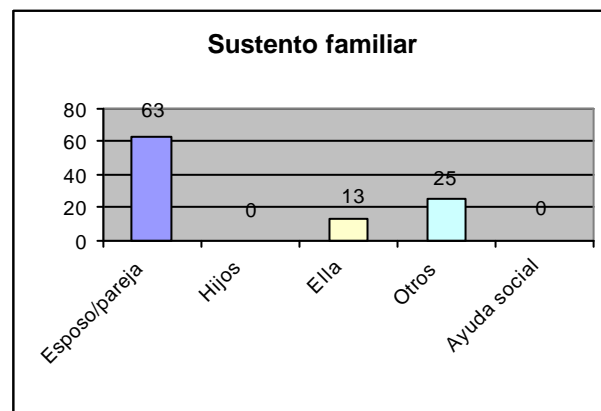


Fig. 6 Sustento familiar

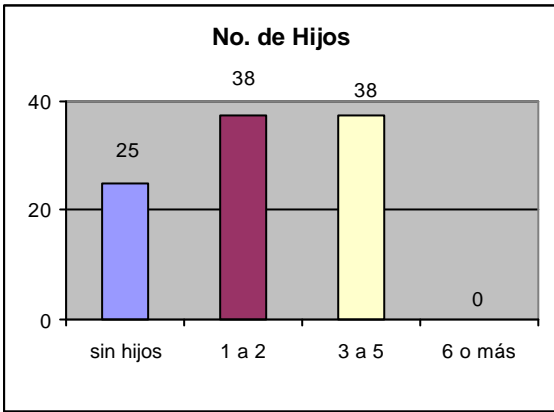


Fig. 7 N° de hijos

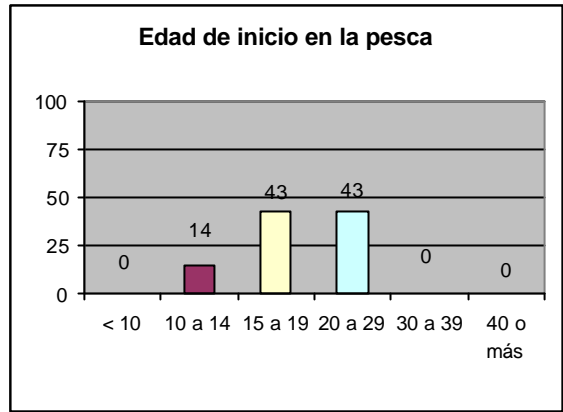


Fig. 10 Inicio en la Pesca

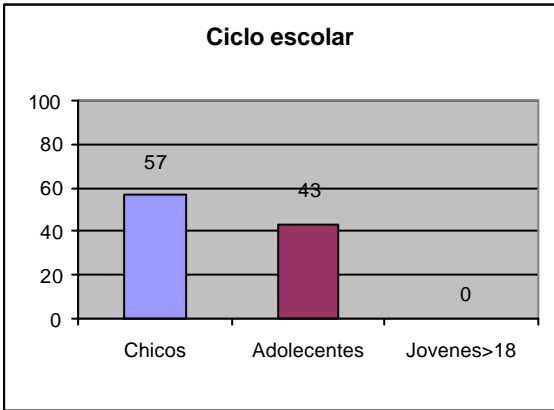


Fig. 8 Ciclo escolar

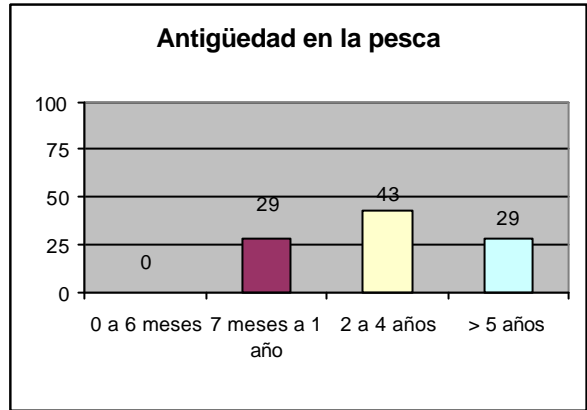


Fig. 11 Antigüedad

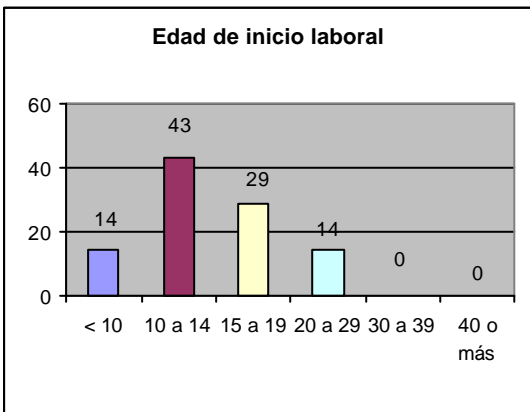


Fig. 9 Inicio laboral

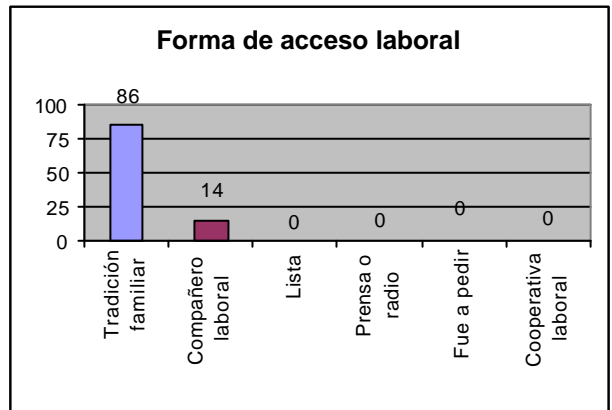


Fig. 12 Acceso Laboral

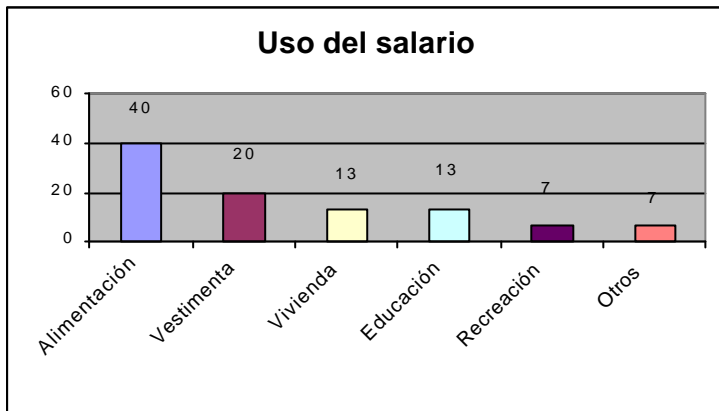


Fig. 13 Uso del salario